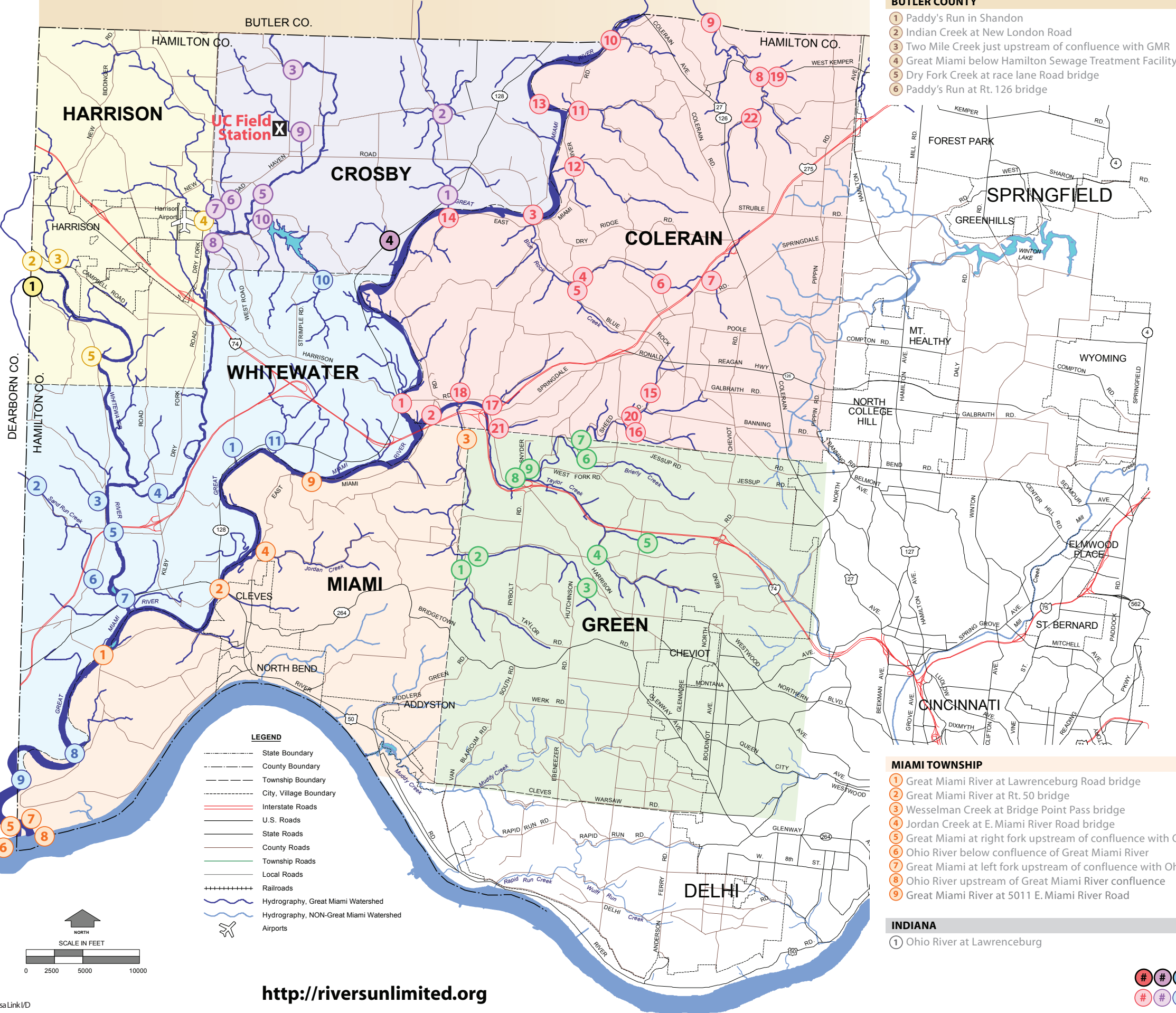


GREAT MIAMI RIVER WATERSHED



BUTLER COUNTY

- 1 Paddy's Run in Shandon
- 2 Indian Creek at New London Road
- 3 Two Mile Creek just upstream of confluence with GMR
- 4 Great Miami below Hamilton Sewage Treatment Facility
- 5 Dry Fork Creek at race lane Road bridge
- 6 Paddy's Run at Rt. 126 bridge

COLERAIN TOWNSHIP

- 1 Great Miami River at Harrison Avenue bridge
- 2 Taylor Creek at E. Miami River Road bridge
- 3 Great Miami River at Blue Rock Road bridge
- 4 N. Branch Blue Rock Creek at Sheits Road / Blue Rock Road intersection
- 5 Blue Rock Creek at Sheits Road
- 6 N. Branch Blue Rock Creek at Newberry Wildlife Refuge
- 7 N. Branch Blue Rock Creek at Colerain Township Park
- 8 Banklick Creek at Kemper Road / Bank Road intersection
- 9 Banklick Creek at Richardson Preserve
- 10 Great Miami River just upstream of Old Colerain Avenue bridge
- 11 Dunlap Run at E. Miami River Road bridge
- 12 Owl Creek at E. Miami River Road bridge
- 13 Great Miami River at Heritage Park
- 14 Great Miami River at Obergeising Complex (Dravo Park)
- 15 Sheed Creek adjacent to Sheed Road b/w Hanley and Desertgold
- 16 Hubble Road Creek just before confluence with Sheed Creek
- 17 Forfeit Creek at Forfeit Run Road / Harrison Road bridge
- 18 Eagle Creek at Eagle Creek Road / Harrison Road bridge
- 19 Tributary to Banklick adjacent to W. Kemper Road near Bank Road
- 20 Sheed Creek just upstream of Hubble Creek confluence
- 21 Mullen Creek adjacent to Mullen Road near Harrison Avenue
- 22 Banklick Creek at Bank Road / Hughes Road intersection

CROSBY TOWNSHIP

- 1 Paddy's Run at Rt. 128 bridge
- 2 Paddy's Run at Willey Road bridge
- 3 Dry Fork Creek at Oxford Road bridge
- 4 Tributary to Great Miami River at Rt. 128 bridge near Crosby Road
- 5 Dry Fork Creek at Mt. Hope Road bridge
- 6 East of Lee Creek at Dry Fork Road bridge
- 7 Lee Creek at Dry Fork Road bridge
- 8 Dry Fork Creek at West Road bridge
- 9 Howard Creek at UC Field Station
- 10 Miami Whitewater Forest Lake outflow just below dam

GREEN TOWNSHIP

- 1 Taylor Road Creek at Taylor Road bridge
- 2 Wesselman Creek just upstream of Taylor Road bridge
- 3 Tributary to Wesselman Creek at 4575 Hutchinson Road
- 4 Taylor Creek at intersection of Reemlin and Johnson Roads
- 5 Tributary to Taylor Creek at 700' east of 5200 Race Road
- 6 Brierly Creek just upstream of confluence with Sheed Creek
- 7 Sheed Creek just upstream of Brierly Creek confluence
- 8 Taylor Creek at Harrison Avenue Bridge adjacent to Sheed Road
- 9 Tributary to Taylor Creek adjacent to Snyder Road at Sheed Road

HARRISON TOWNSHIP

- 1 Jameson Creek at Lawrenceburg Road bridge
- 2 Whitewater River at State Street bridge
- 3 Tributary to Whitewater River near 11801 Campbell Road
- 4 Lee Creek Tributary at Dry Fork Road bridge
- 5 Whitewater River at 7777 Lawrenceburg Road

WHITWATER TOWNSHIP

- 1 Morgan Road Creek at Rt. 128 bridge
- 2 Sand Run Creek at Sand Run Road bridge
- 3 Fox Run at Lawrenceburg Road bridge
- 4 Dry Fork Creek at Kilby Road bridge
- 5 Whitewater River at Suspension Bridge Road bridge
- 6 Sand Run Creek at Lawrenceburg Road bridge
- 7 Whitewater River at Rt. 50
- 8 Great Miami River at Shawnee Lookout County Park
- 9 Great Miami River at Shawnee Lookout Oxbow
- 10 Strimple Creek at Strimple Road bridge
- 11 Interstate Exchange Creek at Rt. 128 bridge

MIAMI TOWNSHIP

- 1 Great Miami River at Lawrenceburg Road bridge
- 2 Great Miami River at Rt. 50 bridge
- 3 Wesselman Creek at Bridge Point Pass bridge
- 4 Jordan Creek at E. Miami River Road bridge
- 5 Great Miami at right fork upstream of confluence with Ohio
- 6 Ohio River below confluence of Great Miami River
- 7 Great Miami at left fork upstream of confluence with Ohio
- 8 Ohio River upstream of Great Miami River confluence
- 9 Great Miami River at 5011 E. Miami River Road

INDIANA

- 1 Ohio River at Lawrenceburg

- available
- taken